



# TO LET

**Unit 7 Crown Passages  
Hale,  
Altrincham  
WA15 9SP**



**Unit available within new retail & leisure development in the heart of the affluent village of Hale, South Manchester**

- Newly completed unit of 1,087 sq ft (101 sq m)
- Immediately available
- Central village location
- Suitable for a variety of uses including retail, food and leisure uses.
- Attractive external areas suitable for display/seating
- Suitable for alternate uses (subject to planning)
- Car parking directly in front of development.

Centurion House, 129 Deansgate,  
Manchester M3 3WR

[www.tfcproperty.com](http://www.tfcproperty.com)

**Tel: 0161 234 0777**



**Commercial Property**  
Advisers and Agents



**TO LET**

**0161 234 0777**

**Unit 7 Crown Passages  
Hale,  
Altrincham  
WA15 9SP**

**LOCATION**

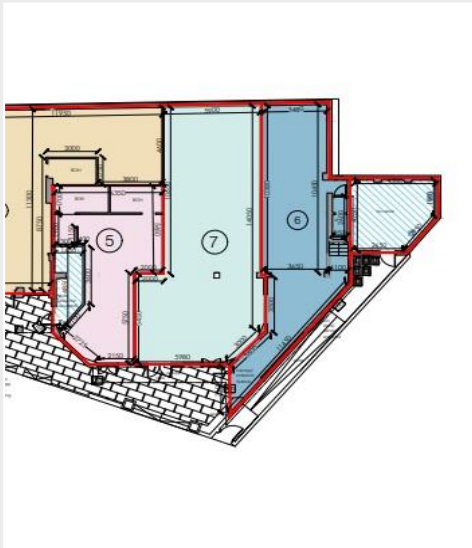
The units are centrally located in a prominent position within the newly complete Crown Passages Development just off Ashley Road in Hale village an affluent suburb of South Manchester.

**DESCRIPTION**

The unit is on the ground floor and provides open plan accommodation ready for prospective tenant fit out. There is a DDA compliant toilet in the property.

The property has a distribution board and are connected to a fire alarm. Incoming tenants will be responsible in complying with building regulations for their fit out.

There is high speed internet connectivity to all units within the development, an initial connection charge will apply, further information is available upon request.



**ACCOMMODATION**

The accommodation provides the following gross internal areas.

Unit 7                    1,087 Sq Ft                    (101 Sq M).

**RATEABLE VALUE**

The properties have yet to be assessed for rates we would advise any interested parties to make any enquiries to Trafford MBC.

**VAT**

VAT will be charged on all outgoings at the prevailing rate.

**TERMS.**

Our clients are seeking to rent the accommodation on lease terms to be agreed . A rental deposit may be required subject to financial status.

**RENT**

Unit 7 - £35,000 per annum excl

**SERVICE CHARGE**

A service charge will be levied for the upkeep of the common parts further information is available upon request.

**VIEWING**

Via the sole agents TFC on 0161 234 0777



Disclaimer: TFC (and their Joint Agents where applicable) for themselves and for the Vendors or Lessors of the property whose agents they are give notice that; i) these particulars are given without responsibility of TFC or the Vendors or Lessors as a general outline only, for the guidance of prospective purchasers or tenants, and do not constitute the whole or any part of an offer or contract; ii) TFC cannot guarantee the accuracy of any description, dimensions, references to condition, necessary permissions for use and occupation and other details contained herein and any prospective purchasers or tenants should not rely on them as statements or representations of fact but must satisfy themselves by inspection or otherwise as to the accuracy of each item; iii) no employee of TFC (and their joint agents where applicable) has any authority to make or give any representation or warranty or enter into any contract whatsoever in relation to the property; iv) VAT may be payable on the purchase price and/or rent, all figures are quoted exclusive of VAT, intending purchasers or lessees must satisfy themselves as to the applicable VAT position, if necessary by taking appropriate professional advice; v) TFC will not be liable, in negligence or otherwise, for any loss arising from the use of these particulars.